



BE SURE TO LIKE MIDWEST BUSINESS EXCHANGE ON FACEBOOK

<https://www.facebook.com/midwestbusinessexchange/>

If you have missed any of our email blasts, please go to www.mbebarter.com, click **Members** and then **Barter Deals**

Opening Day April 26th!



Located at **7600 Lover's Ln. Garden Spot Greenhouse** has been supplying the residents of SW MI with quality perennials, annuals, and vegetables since 2004. Limited number of certificates available through **MBE**.
Call 269-344-8800



Click For A Complete List of Participating Restaurants

Welcome to our New Members

Samuel
Mancino's
PIZZA & GRINDERS

Samuel Mancino's Pizza & Grinders is now open at
3833 Gull Rd.

Under new ownership with an exciting, updated menu
of all your **Mancino's** favorites!

Open Seven Days a week 11:00-9:00

Call **Lance** @ **MBE 269-344-8800** for certificates



Appliance Blow Out



used.

Some washers have missing cords.

Call **MBE** for all the details, **269-344-8800**.

Welcome to our New Members



Labor of Love Scrubs offers quality medical uniforms, footwear, accessories & even BETTER service!

Call **269-488-2420** or better yet, stop in at 1020 E Cork St, **Tuesday through Friday, 10:00-6:00 & Saturday 10:00-3:00**



**Complete
Janitorial
Services**

simple belief that quality workmanship and open communication are the keys to true customer satisfaction.

Call **Lance at MBE 269-344-8800 for more information.**



Rolling River Apparel has over 20 years of experience to make sure you are satisfied.

Quality meets Service!

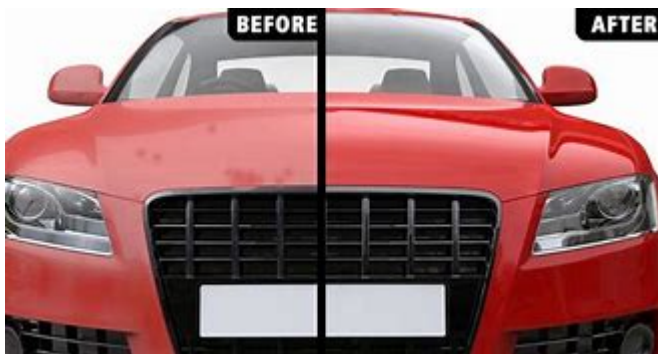
Call Lance at **MBE 269-344-8800**



Don't Let A Dirty Ride Kill Your Vibe! Get down to
Pristine Clean Detail & Ceramic Coatings & let
Scott get your ride looking good.

413 N Grand St, Schoolcraft, MI

Text 269-598-2490





CREATE SPACE

PORTABLE STORAGE

Portable storage units, mobile offices, shipping containers. Climate controlled warehouse storage.
Call **Lance at MBE, 269-344-8800.**



Lightly used **Yamaha YHR-314 French Horn.**
Includes hard case. **\$500.00**, or **Bach TR300**



8662 N 32nd St in Richland. Call **Lance** at **MBE**
269-344-8800 for QR codes.

Tile, Tile & More Tile!

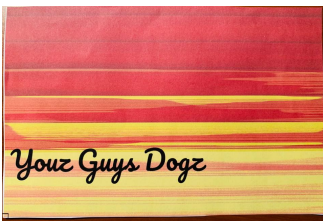


4"x12" wall tile. Perfect for backsplash or shower surround



12"x24" floor tile. Polished floor tile.

Call **MBE** at **269-344-8800** for pricing and availability



Youz Guys Dogz is bringing **good food** to the **good people** of West Michigan! Located at **312 Kalamazoo Mall**



MI(my) Boba is the new place in Kalamazoo where great tea & fantastic treats meet.. Located at **1750 S**

Call **MBE 269-344-8800**
for certificates

10:00-9:00, Sunday
11:00-8:00
Call Lance at **MBE**
269-344-8800 for
certificates.



At **Earthly Esthetics**,
we help empower
women by reclaiming
youthful, clear skin
through organic, results
oriented skincare
treatments.

Located at 4242
Stadium Dr. (**Inside The**
Zen Dens)

Hours: Tuesday 9-5,
Wednesday & Thursday
10-7, Friday 9-5

Call **Ariel** at **269-729-**
6296 to make an
appointment.



Safety Simplified! A PPE

Distributor of all safety
related items in the
workplace

Email Josh at

jas@safety-services-inc.com

Let him know you are an
MBE member in the
subject line.

CLICK FOR MORE NEW MEMBERS

Subscribe

Past Issues

Translate ▼

All fees must be current for certificates and rentals.

This email was sent to <<Email Address>>

[why did I get this?](#) [unsubscribe from this list](#) [update subscription preferences](#)

Midwest Business Exchange · 8135 Cox's Drive · Portage, Mi 49024 · USA

